

# East Midlands Strategic Migration Partnership





# Contents

Introduction	3
Background Information	3
Highlights 2008 - 9	4
Task Groups	6
EMSMP Members	7
Size of our Business	8
Principal Aim	8
Strategic Objectives	8
Resources	10
Framework for our Activity	10
Activity from 1 April 2008 - 31 March 2009	
Strategic Objective 1	12
Strategic Objective 2	13
Strategic Objective 3	15
Strategic Objective 4	16
Strategic Objective 5	16
Strategic Objective 6	17
Strategic Objective 7	18
Strategic Objective 8	18
List of Abbreviations	19
EMSMP Business Plan 2008-9	19



## Introduction

During the period of 1 April 2008 - 31 March 2009 East Midlands Strategic Migration Partnership (EMSMP) has continued to develop a wide-ranging policy agenda to address the most pressing issues in relation to asylum seekers, refugees and migrants.

EMSMP has continued to facilitate and promote strong partnership working with key stakeholders, this strong partnership work has been central to delivering positive outcomes for both economic and forced migrants in the region.

## Background Information

- 1.1 EMSMP is one of eleven UK partnerships funded by the UK Border Agency (UKBA). It was established in March 2000 to originally co-ordinate activities regarding the dispersal, accommodation and support of asylum seekers across the region. However, from April 2007 its role has been expanded to incorporate the wider migration agenda.
- 1.2 The region covers the counties of Derbyshire, Leicestershire, Lincolnshire, Northamptonshire, Nottinghamshire and Rutland. There are three unitary authorities in the region: Derby, Leicester and Nottingham.
- 1.3 EMSMP has established a structure (see page 19) which encompasses the Regional Strategic Co-ordination function as prescribed by UKBA, to help facilitate the achievement of its overall aims.
- 1.4 Our funding is from UKBA. It is a requirement of the Enabling Grant to submit a yearly report to the UKBA by 30 June 2009.
- 1.5 The attached business plan outlines the work undertaken by EMSMP between 1 April 2008 and 31 March 2009.

# Highlights 2008 - 9

2.1 The last year has seen the EMSMP make progress in a number of key areas. The Partnership Board has met four times during the year and has focused on specific areas, including ESOL, Health inequalities of migrant workers and Education.

2.2 Over the past year the relationship with the United Kingdom Border Agency (UKBA) regional directorate has been strengthened and a number of stimulating and productive consultation events on policy issues have been held, on:

- Asylum Reform
- Local Immigration Teams
- Voluntary Sector

EMSMP was a significant contributor to the consultation on the Unaccompanied Asylum Seeking Children held in the West Midlands.

2.3 EMSMP supported the regional new communities event in Boston in June 2008, organised by Boston Borough Council. The event was chaired by the EMSMP, and was a product of partnership with GOEM and Boston Borough Council. The event was aimed at identifying good practice in the region, and developing collaborative ways of working to tackle issues relating to migrant workers.

The event included workshops on:

- Housing: Housing needs, provision and standards
- Community Cohesion: Strengthening and developing community cohesion
- Health, GP registrations, health advice and provision
- Employment and Skills: ESOL, Business opportunities, training and development
- Education/children's services: ESOL, School accommodation and education service provision

2.4 Migration Impacts Fund Participation

EMSMP has been involved in the application process of the Migration Impacts Funds. EMSMP looks forward to working with and supporting the successful applicants.





2.5 **After the Fire - Business Continuity put to the test**

On Friday 30 May 2008, there was a significant fire at Melton Borough Council, the North Wing of which is home to EMSMP. This tested our business continuity arrangements to the full. We are pleased to say that with flexibility, planning, and the goodwill and support from employees, partners such as EMRA, and local authorities, we came through the experience with a minimal impact on the services provided to partnership members.



# Task Groups

3.1 EMSMP has established five task groups which were launched in 2008, which focus on priorities in the region. Membership of the task groups have been drawn from a wide cross sector audience, further extending partnership working across the region. The key themes which the task groups are focusing on are set out below :-

## 3.1.1 **Employment and Skills Task Group**

The Employment and Skills task group has been exploring regional welcome packs and the East Midlands Regional Skills for Life Strategy.

## 3.1.2 **Health Task Group**

The Health task group has been exploring health needs and inequalities of migrants in the region. The task group has been developing an outline of a research project to explore the health needs of migrant workers and map existing practice in the region.

## 3.1.3 **Housing Task Group**

The Housing task group has focused on the Decent and Safe Homes report for Derby City; the task group has been considering the implications of the recommendations for the region.

## 3.1.4 **Statistics Task group**

The Statistics task group has been considering statistics held on migrants. The changing economic climate has added another dimension to this area of work, emphasising the need for partnership working and accurate data collection.

## 3.1.5 **Unaccompanied Asylum Seeking Children Task Group**

The Unaccompanied Asylum Seeking Children task group has focused on the UASC reform programme. The contributions from the East Midlands to the regional consultation event have had a direct impact on the shape of the national reform programme which will be further developed in 2009/10.

# EMSMP Members

4.1 Membership is open to all local authorities, other statutory authorities, voluntary and private sector organisations who are involved or have an interest in these activities.

4.2 Our members are:

## Elected Members



Cllr Ken Armstrong  
Derbyshire County  
Council (Chair)



Cllr Fiona Martin  
East Lindsey District  
Council (Vice Chair)



Cllr Carol Pepper  
Gedling Borough  
Council



Cllr David Sprason  
Leicestershire County  
Council

## Local Authority Officers

Children's Services - Leicester City  
Council

Adult Services - Rutland County Council

Housing Services - Nottingham City  
Council

## Police

Inspector, Community Safety Bureau

## Health

Assistant Regional Director of  
Public Health

## Jobcentre Plus

Regional External Relations Manager

## GOEM

Safer and Stronger Directorate

## UKBA Regional

### Contracted Accommodation Providers

Refugee Support

Priority Properties North West

## Regional Voluntary

### Sector Organisation

One East Midlands

### One Stop Service Provider

Refugee Action

## Midlands TUC

Regional Secretary

## UK Border Agency

Regional Director, Midlands & Eastern  
Region

## Representative on

### National Migration Group

Assistant Chief Executive, Lincolnshire  
County Council

## emda

Head of Rural Communities

## Lead Organisation

LGEM

# Size of our Business

- 5.1 We believe there are in the region, currently:
- 1162 asylum seekers supported under Section 95 (March 2009)
  - 1026 people supported under Section 4 arrangements (March 2009)
  - 143 people receiving subsistence only support from UKBA (March 2009)
  - 72 unaccompanied asylum seeking children (February 2008)
  - In 2007 there were 22,245 applications for the Worker Registration Scheme (WRS) in the region. In 2006/7 there were 41,020 applications for National Insurance Numbers (NINO).

## Principal Aim

- 6.1 “To provide a regional advisory, development and consultation function for member organisations from the statutory, voluntary, community and private sectors - for the co-ordination and provision of advice, support and services for migrants.”

## Strategic Objectives

- 7.1 EMSMP works to a series of key objectives set out in the Enabling Grant Agreement with UKBA. The key objectives are:
- a. To provide a regional multi-sector, multi-agency Strategic Migration Partnership structure to deliver the requirements of the enabling role.
  - b. To facilitate and promote the effective contact, co-ordination and partnership working between the Strategic Migration Partnership, local authorities, police services, health authorities, employment and career services (including Jobcentre Plus), Government Regional Offices, the regional CBI/Employers Forum, the regional TUC, local and regional voluntary groups (including One Stop Service Providers), and the private sector (principally the UKBA contracted accommodation providers) – working across localities and service providers.
  - c. To facilitate regional strategic co-ordination discussions.
  - d. To gather regional data and trends, and monitor and evaluate the impact of asylum and other immigration policies on the dispersal process and provision of support and services for migrants.

- e. To promote community safety and cohesion through a multi-agency approach.
- f. To identify and seek to address gaps in resources, service provision and delivery to asylum seekers, unsuccessful asylum seekers, refugees and migrant workers.
- g. To ensure that local authority emergency planners and other relevant organisations are aware of the existence (and, where appropriate, placement) and additional needs of asylum seekers, unsuccessful asylum seekers, refugees and migrant workers (some of whom will have limited or no understanding of English).
- h. To manage information regarding asylum seekers, unsuccessful asylum seekers, refugees and migrant workers by translating for local and regional use policies and current trends/thinking.
- i. To co-ordinate participation in and response to UKBA consultation exercises regarding migrants and migration.
- j. To provide training and awareness regarding migrants and migration to local authorities and other organisations.





## Activity

1 April 2008 - 31 March 2009

## Resources

- 8.1 EMSMP currently receives a three year Enabling Grant from UKBA. The total amount of money available to the EMSMP for 2008 - 2009 is £130,000.

## Framework for our Activity

- 9.1 The Immigration and Asylum Act 1999.
- 9.2 The Nationality, Immigration and Asylum Act 2002
- 9.3 The Asylum and Immigration Act (Treatment of Claimants etc) 2004
- 9.4 The Immigration, Asylum and Nationality Act 2006
- 9.5 The UK Borders Bill 2007
- 9.6 The New Asylum Model (NAM)
- 9.7 The Race Relations Act 1976
- 9.8 The Race Relations (Amendments) Act 2000
- 9.9 The Children Act 1989 / 2004

## Activity from 1 April 2008- 31 March 2009

### 10.1 Strategic Objective 1

- Developed an effective structure for EMSMP
- Held quarterly meetings of the Partnership Board
- Submitted Annual Report for 2008/9 to UKBA
- Half-year report 2008/9 submitted to UKBA

### 10.2 Strategic Objective 2

- Attended at multi-agency forum meetings in Leicester, Nottingham and Derby
- Boston New Communities Conference, supported and chaired by EMSMP

### 10.3 Strategic Objective 3

- Statistical update provided at each quarterly EMSMP meeting
- EMSMP section on the LGEM website populated and updated as necessary

### 10.4 Strategic Objective 4

- Develop regional media good practice guide for local authorities and MAFs

### 10.5 Strategic Objective 5

- Review effectiveness of sub groups and make recommendations

### 10.6 Strategic Objective 6

- The Partnership Lead Officer has accompanied the Chair at LGA Task Group meetings
- The Partnership Lead Officer has attended Regional Partnership Managers' Network meetings
- Relevant information, bulletins, etc has been circulated to the EMSMP where appropriate via email or the website

### 10.7 Strategic Objective 7

- Consultations responded to as appropriate

### 10.8 Strategic Objective 8

- Councillor training on migrant and asylum issues in progress to be delivered in 2008/9
- Arrangements have been made for training for EMSMP partners

### Strategic Objective 1

To provide a regional multi-sector, multi-agency Strategic Partnership structure to deliver the requirements of the enabling role.

Outcomes	Actions	Target/KPI Indicator	Lead	Time scale	Status
LGEM functioning effectively and delivering the requirements of the enabling role	LGEM Community Cohesion Sub Group meetings to be scheduled 3/4 weeks before EMSMP – papers to be circulated at least one week in advance	1 x Community Cohesion Sub group and 1 X EMSMP meeting held	Partnership Lead Officer	Each quarter	Completed
Effective performance management systems and reporting mechanisms in place	Annual report for 2007/8 to be submitted to UKBA	Final report completed & submitted by 30 June 2008	Partnership Lead Officer	1st quarter	Completed
	Audited accounts identifying expenditure on which Grant was spent for 2007/8 to be submitted to UKBA before submission deadline	Audited accounts completed and submitted by 30 June 2008	Partnership Lead Officer	1st quarter	Completed
EMSMP able to continue working in the event of a disaster	Half yearly report submitted to UKBA	Report completed and submitted by 31 October 2008	Partnership Lead Officer	3rd quarter	Completed
	Annual Business Plan developed as primary EMSMP operational document for 2009/10	Annual Business Plan submitted to UKBA by 31 March 2009	Partnership Lead Officer	3rd quarter	Completed 4th quarter
	Preparation of an EMSMP Emergency Plan – meeting held in January 2008 and action rolled over to 2008/9	Emergency plan produced and adopted by the Partnership	LGEM Co-ordinator	1st quarter	Completed
To work with service users in order to achieve EMSMP current objectives	To establish a general Stakeholder Forum	Stakeholder Forum established	Partnership Lead Officer	3rd quarter	Completed

## Strategic Objective 2

To facilitate and promote the effective contact, co-ordination and partnership working between the EMSMP, local authorities, police services, health authorities, employment and career services (including Jobcentre Plus), Government Regional Offices, the regional CBI/Employers Forum, the regional TUC, local and regional voluntary groups (including One Stop Service Providers), and the private sector (principally the UKBA contracted accommodation providers) – working across localities and service providers.

Outcomes	Actions	Target/KPI Indicator	Lead	Time scale	Status
Effective and consistent provision of services to asylum seekers, unsuccessful asylum seekers and refugees in all major cluster sites delivered through effective multi-agency partnership working	Partnership Officers attend multi-agency meetings	4 X MAF meetings attended over a year	LGEM Officers	Each quarter	Completed
	Update reports produced for MAFs	Quarterly following EMSMP meetings	LGEM Officers	Each quarter	
Standardised in-country police referral procedures developed for the region	Develop police referral protocol, in partnership with key agencies	Protocol produced and adopted by regional constabularies	Partnership Police rep	3rd quarter	To be considered as part of 2010/11 Business Plan
Regional information on new communities	Collection of information and production of regional report. Liaison with regional police counterparts	Circulation of report	Partnership Police rep	3rd quarter	Attended local new communities meetings in the region. Issues raised fed into the partnership
Co-ordinated cross sector approach to the support of unaccompanied asylum seeking children.	Social Services leads group meetings scheduled each quarter – papers to be circulated at least one week in advance.	1 X Social Services leads group meeting held	Regional UASC Chair	Each quarter	Completed

### Strategic Objective 2 cont.

Outcomes	Actions	Target/KPI Indicator	Lead	Time scale	Status
Co-ordinated cross-sector approach to asylum seeker and refugee integration	Publicise the Refugee Integration Framework and look into the creation of toolkits for the MAFs to help produce local integration strategies	Publicise the Framework on the LGEM website.	LGEM Co-ordinator	2nd quarter	Completed
Sub groups support the facilitation of the migration agenda in the East Midlands	Sub groups report to the EMSMP on progress of key themes	4 sub groups report to EMSMP	Sub groups	Quarterly	Completed
To support sub regional initiatives through multi-agency working	To support/attend events/conferences and provide reports on the same to EMSMP	Reports to EMSMP	Partnership Lead Officer	As appropriate	Completed

### Strategic Objective 3

To gather regional data and trends, and monitor and evaluate the impact of asylum and other immigration policies on the dispersal process and provision of support and services for migrants.

Outcomes	Actions	Target/KPI Indicator	Lead	Time scale	Status
Service provision and delivery influenced by accurate information regarding the numbers and needs of asylum seekers, unsuccessful asylum seekers and refugees in the region	Collect and distribute accurate information regarding the number of asylum seekers, unsuccessful asylum seekers and new refugees in the region	Information included in quarterly Partnership Board papers	LGEM Co-ordinator	Quarterly	Completed
		Information published on LGEM website	LGEM Co-ordinator	Monthly (excluding UASC info)	Restricted data, available on request from partners
	Co-ordinate thematic needs mapping exercises, in partnership with other key organisations, as identified by the EMSMP	Needs mapping exercises completed	LGEM Co-ordinator	In response to demand	No demand in 2008/09
	Conduct scoping exercise in partnership with local university/regional observatory	Scoping exercise completed	Partnership Lead Officer	2nd quarter	Ongoing

### Strategic Objective 4

To promote community safety and cohesion through a multi-agency approach.

Outcomes	Actions	Target/KPI Indicator	Lead	Timescale	Status
Improved host community awareness of asylum, refugee and migrant issues	Organise asylum and refugee media strategy training for local authority press officers and MAF representatives.	Two training workshops per annum held	Partnership Lead Officer	2nd quarter & 4th quarter	No demand in 2009/10
	Develop regional media good practice guide for local authorities and MAFs	Media good practice guide reviewed and published on website	LGEM Co-ordinator	1st quarter	Completed

### Strategic Objective 5

To identify and seek to address gaps in resources, service provision and delivery to migrants.

Outcomes	Actions	Target/KPI Indicator	Lead	Timescale	Status
Resources and service provision meets the needs of migrants	Gaps in resources and service provision identified by MAFs are fed into the EMSMP and potential solutions developed	Report published on the LGEM website	EMSMP	As appropriate	Issues identified at MAF meetings reported to UKBA
	Review effectiveness of sub groups and make recommendations	Sub Groups reviewed	EMSMP	4th quarter	Completed

### Strategic Objective 6

To manage information regarding migrants by translating for local and regional use policies and current trends/thinking.

Outcomes	Actions	Target/KPI Indicator	Lead	Timescale	Status
Regional and local policy supported by information and advice provided by the EMSMP	Partnership Lead Officer to attend LGA Task group meetings	4 X meetings attended	Partnership Lead Officer	On going	Completed
	EMSMP Officers attend meetings with regional counterparts	As and when arranged	Partnership Manager	As appropriate	Completed
	Relevant national bulletins, policy reports and information updates communicated to EMSMP stakeholders	Relevant information distributed via EMSMP email networks	Partnership Manager	Ongoing	Completed
Effective communication and information sharing between EMSMP stakeholders	Update information on LGEM website	Relevant information displayed on LGEM website	Relevant information displayed on LGEM website	Ongoing	Completed
		Update to LGEM website	LGEM Co-ordinator	As appropriate	Completed
	Communications strategy	Produce strategy and publish on website	LGEM Co-ordinator	2nd quarter	Completed

### Strategic Objective 7

To co-ordinate participation in and response to UKBA consultation exercises regarding migrants and migration.

Outcomes	Actions	Target/KPI Indicator	Lead	Timescale	Status
Relevant EMSMP stakeholders participate and respond accordingly to future UKBA consultation exercises	Information provided to EMSMP stakeholders, views sought and position papers produced	Responses submitted to UKBA on time	Partnership Lead Officer	As appropriate	Completed

### Strategic Objective 8

To provide training and awareness regarding migrants and migration to local authorities and other organisations.

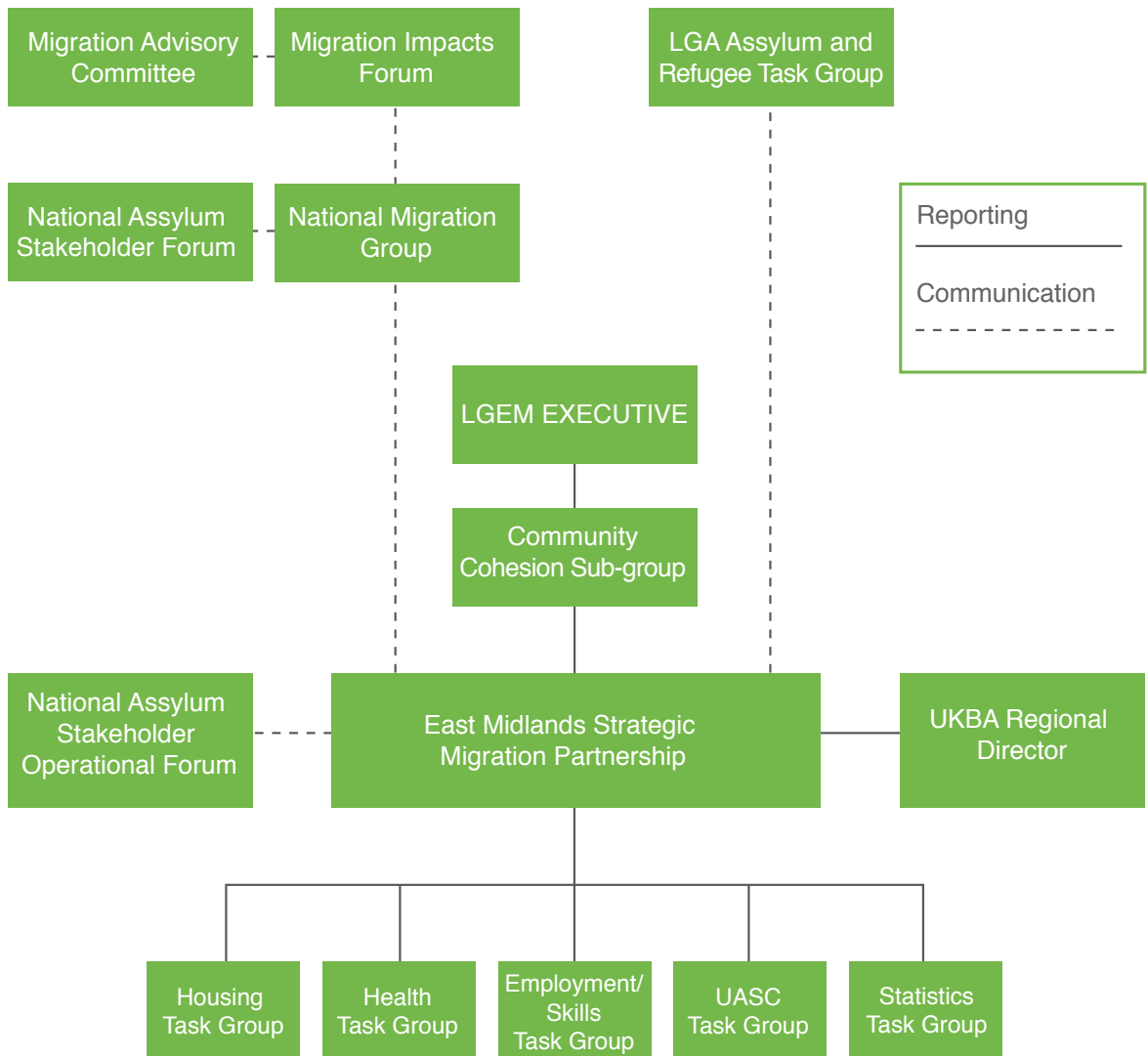
Outcomes	Actions	Target/KPI Indicator	Lead	Timescale	Status
Improved awareness of migrants and migration issues amongst local authorities and other relevant organisations involved in migrant issues	Organise training for local authority Councillors to raise awareness of migrants and migration issues	Training programme for Councillors to be developed and delivered	LGEM	3rd/4th quarter	Ongoing
EMSMP employees to keep at the forefront on all migrant issues	Organise training for EMSMP partners	To continuously improve service delivery to EMSMP	LGEM	As appropriate	Training event held at East Midlands Airport for partnership board members

**List of abbreviations:**

EMRA	East Midlands Regional Assembly
EMSMP	East Midlands Strategic Migration Partnership
ESOL	English for Speakers of Other Languages
GOEM	Government Office East Midlands
LGA	Local Government Association
LGEM	Local Government East Midlands
MAF	Multi-Agency Forum
UASC	Unaccompanied Asylum Seeking Children
UKBA	UK Border Agency

**EMSMP Structure and Lines of Communication**

**Appendix A**



## Local Government East Midlands ●●●

Local Government East Midlands  
The Belvoir Suite  
Council Offices  
Nottingham Road  
Melton Mowbray  
Leicestershire LE13 0UL

Telephone 01664 502 555  
Fax number 01664 568 201  
Email [info@lg-em.gov.uk](mailto:info@lg-em.gov.uk)  
Web [www.lg-em.gov.uk/migrationpartnership](http://www.lg-em.gov.uk/migrationpartnership)

