


# #Commit2Infrastructure

Ian Jenkinson [info@stilwell-ltd.co.uk](mailto:info@stilwell-ltd.co.uk)

## ICE's "Commit to Infrastructure" General Election campaign now in full swing



Date: 6 JANUARY 2015

Share:  [Tweet](#) 58 [Like](#) 98 [Share](#) 17 [g+](#)Topics: [Energy](#) [Structures and buildings](#) [Transport](#)  
[Waste management](#) [Water](#) [Public affairs](#)

We've now begun our General Election campaign *#Commit2Infrastructure* in earnest, with a planned programme of activity to ensure that whichever party wins the General Election, the public will benefit from Government placing infrastructure at the heart of its



### Related news

4 FEBRUARY 2015

[Infrastructure and the election – get behind the campaign](#)

United Kingdom | [Additional info](#)

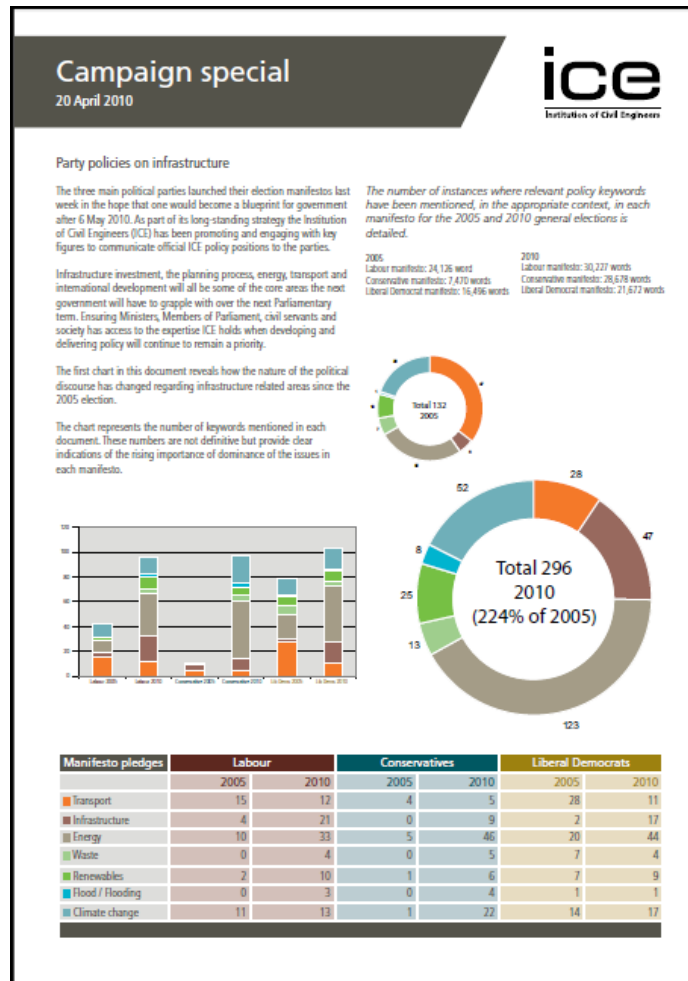
3 FEBRUARY 2015

[Labour infrastructure review is a valuable contribution to the debate, says ICE](#)

United Kingdom | [Additional info](#)

2 FEBRUARY 2015

# Continuation of 2010 election campaign



# #commit2infrastructure

INFRASTRUCTURE

## Next government must make infrastructure a priority says ICE

The party which wins the General Election must put infrastructure at the heart of its economic policy and prioritise investment, the ICE said this week.

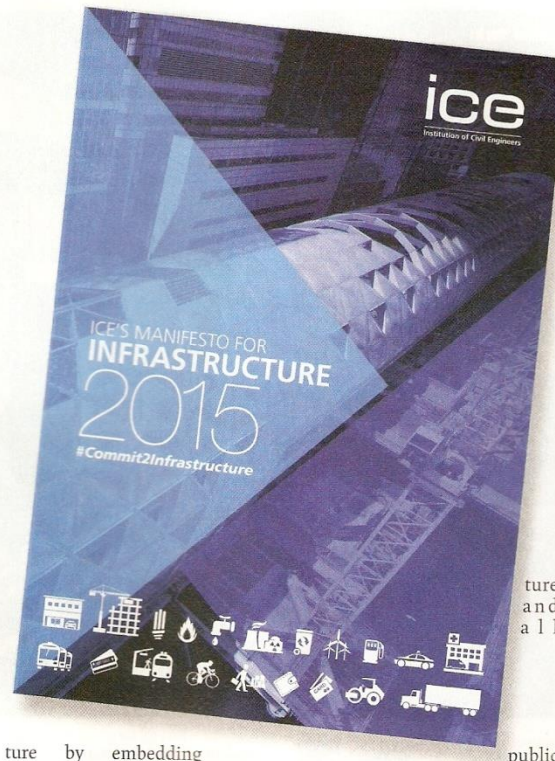
Focus on infrastructure is vital to the UK's efforts to drive long term economic growth, job creation, communities regeneration and quality of life improvements.

The ICE's *Manifesto for Infrastructure*, published this week, warns that Britain will lose its competitive edge if politicians choose short term, vote winning policies.

This would result in "other competing nations taking our edge, and the UK's resilience diminishing".

The ICE said the next government must establish a long term vision for infrastructure and a framework that puts this above party politics. This would build on progress achieved in recent years.

The ICE also said those elected on 7 May must unlock the potential of city regions to help rebalance growth. They must also future proof vital infrastructure by embedding climate change resilience into decision making, it said.



**"We need to build the UK's resilience, rebalance growth, and secure a world class engineering workforce"**

Nick Baveystock, ICE

lished across political divides, resulting in some welcome schemes and initiatives and infrastructure rightly positioned high on the political agenda.

"We are, however, at a critical time – where the scale of the UK's needs is large and growing. Public finances remain tight and we are slowly emerging as an attractive market for infrastructure investment – it is vital therefore that we do not lose impetus," he said.

"Whichever party wins the General Election, infrastructure should form a central plank of its economic policy – building on the progress already made and using infrastructure to realise the UK's full economic potential," said Baveystock.

"Failing to give it a front row

ture  
and  
all

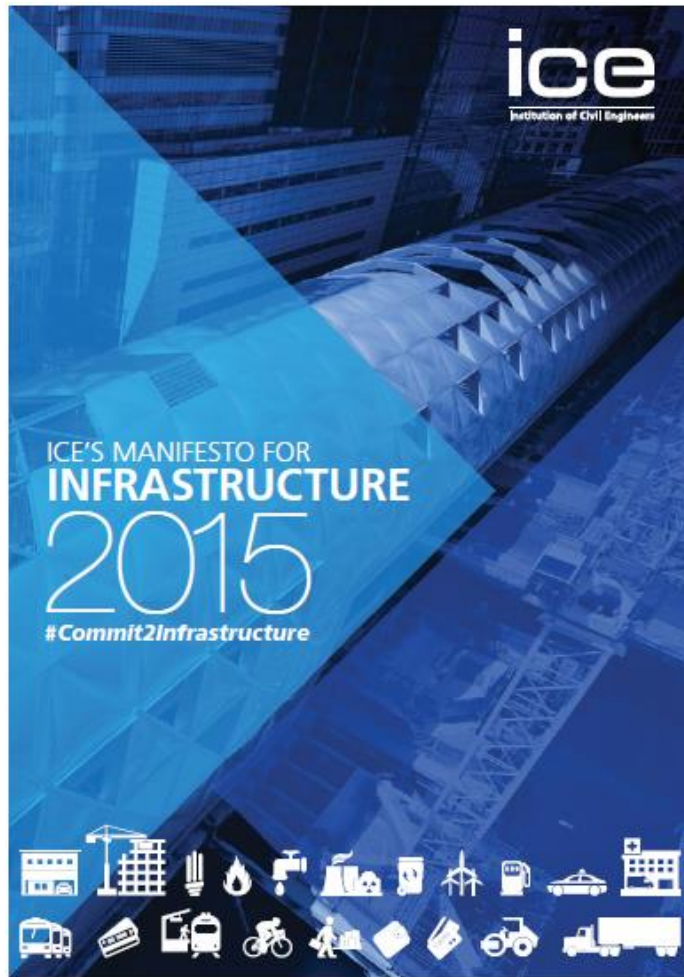
public

ture by embedding

# The 5 step infrastructure challenge

- **Give infrastructure the front row seat**
- **Be visionary**
- **Be bold**
- **Get smarter at engaging with the public**
- **Build on the progress of the last 5 years**

# ICE 2015 Election



- Long-term vision
- Value for money
- Embed resilience
- City regions
- Upskill our workforce

# The next Government should:-

- Create an independent infrastructure body
- Act swiftly on Davies Airports Commission
- Clear the road maintenance backlog
- Embed resilience in new infrastructure
- Carbon-free energy market
- Flood risk management, long-term maintenance
- Devolve transport powers to City-regions
- Apprenticeships quality & quantity
- School careers for vocational and technician roles
- Office for Resource Management , circular economy

# The State of the Nation reports

## ICE recommends

---



In State of the Nation:  
Infrastructure, ICE recommends:



**#thisiscivilengineering**

**#Commit2Infrastructure**

**@ICE\_engineers**

Ian Jenkinson [info@stilwell-ltd.co.uk](mailto:info@stilwell-ltd.co.uk)