



CHETWYND

THE TOTON AND CHILWELL
NEIGHBOURHOOD FORUM



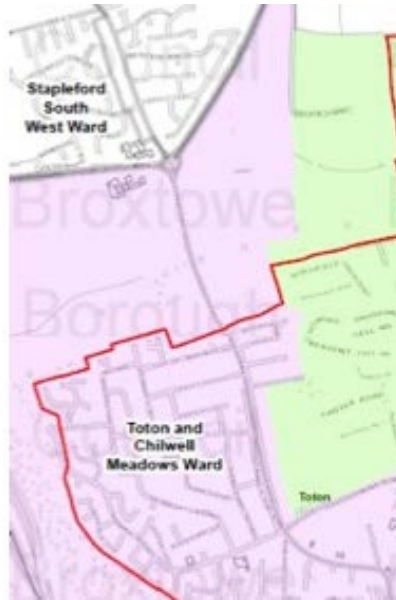
Toton

Social Planning for the
future community

Introduction

- The basis of the forum came together in November 2016
- The initial informal Steering group was formed with Chairman, Secretary and Treasurer being voted in.
- Unofficial SG worked on a Constitution and Neighbourhood Area.
- Chetwynd – The Toton and Chilwell Neighbourhood forum was given official designation in March 2017 after some debate adjustment.

Neighbourhood forum area



NF requested are

NEIGHBOURHOOD PLANNING NOTICE
The Neighbourhood Planning (General) Regulations 2012 (Article 7)

In accordance with the above Regulations, notice is hereby given that Broxtowe Borough Council has DESIGNATED (as modified) the following neighbourhood area:

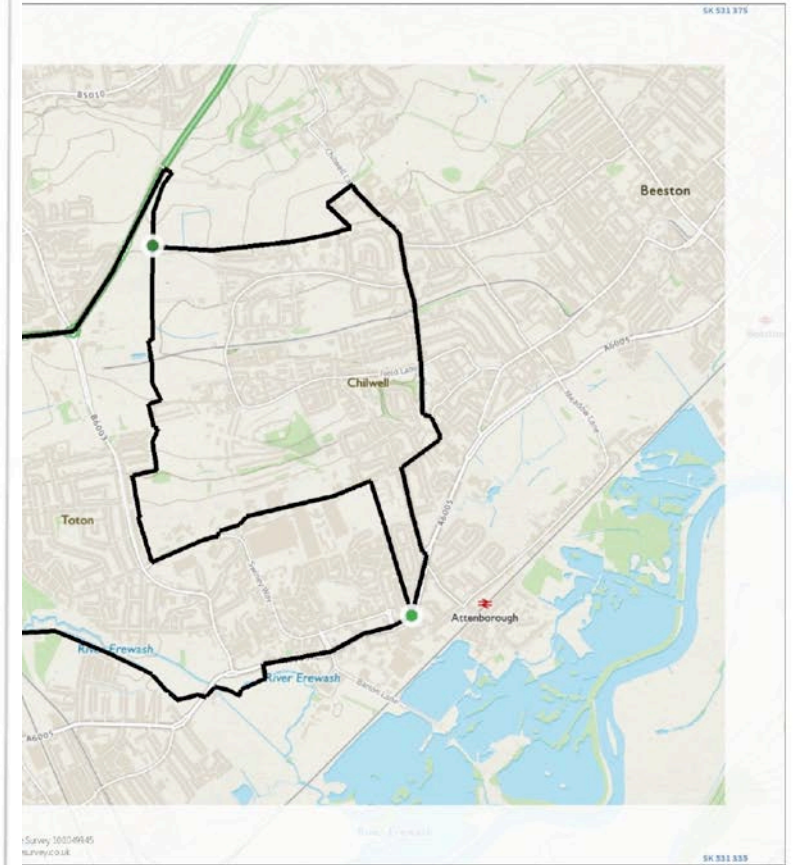
Name of Neighbourhood Area: CHETWYND: THE TOTON AND CHILWELL NEIGHBOURHOOD AREA
Name of 'relevant body': CHETWYND: THE TOTON AND CHILWELL NEIGHBOURHOOD FORUM

© Crown Copyright and database right 2017. Ordnance Survey 100019453
You are not permitted to copy, sub-license, distribute or sell any of this data to third parties in any form.

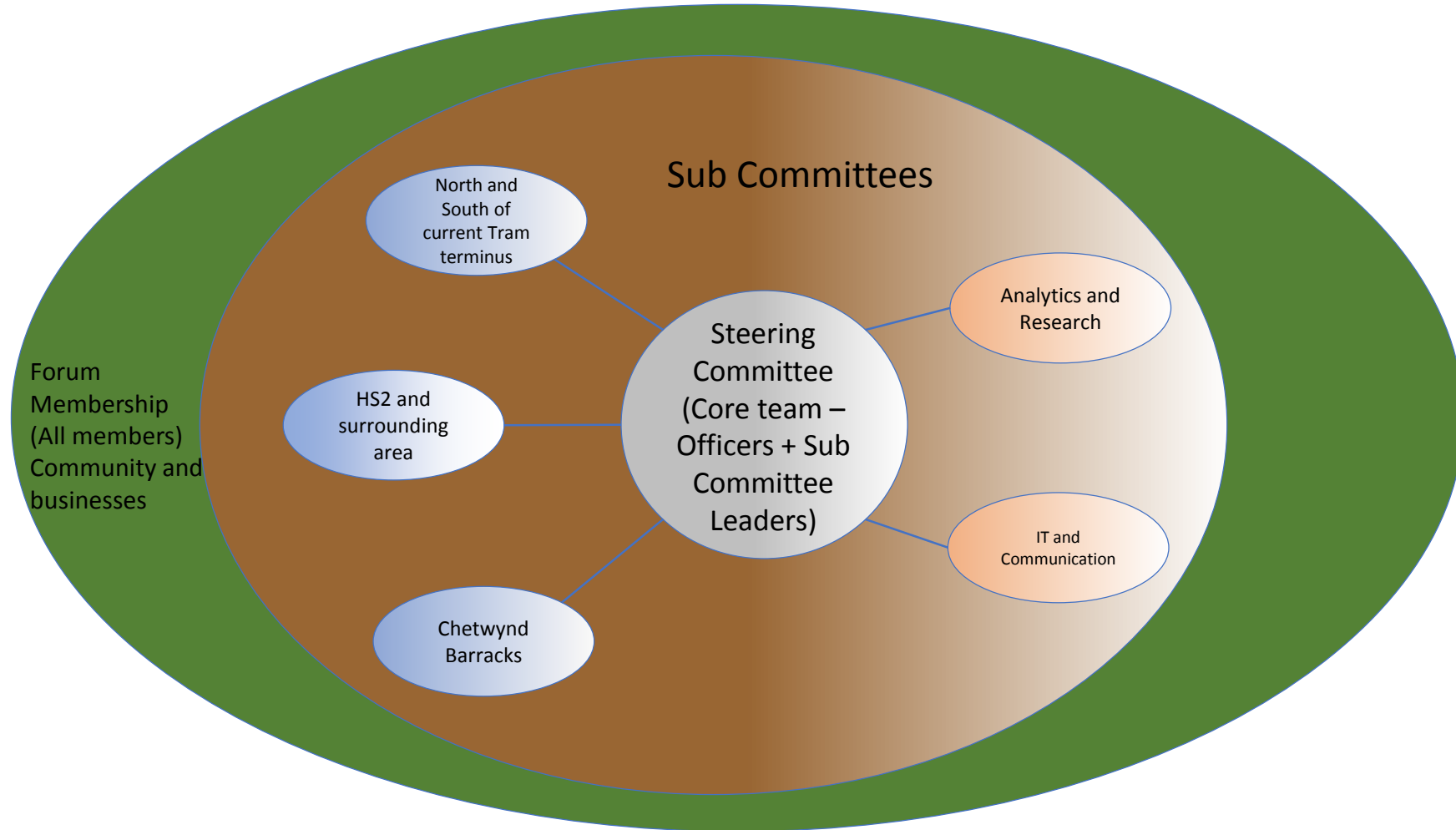
Signed: *Steffen Gauder*
Date: 09/03/2017


**Broxtowe
Borough
COUNCIL**

proposed NF area



Formation of NF team and sub committees



 **Steering Committee – Core, Officers**

 **Steering Group**

 **Forum membership**

 **Sub Committee**

 **Resources / Function groups**

Initial Stakeholders identified

Broxtowe Borough
Council

Meetings held with Council representatives to establish a working relationship & ensure we are updated on issues relating to the Forum Area

HS2 Growth
Partnership:
HS2 Station Delivery
Board (D2N2)

Formed by HS2 Ltd to examine economic potential and way forward in key strategic areas.

Peveril Homes &
UKPP, who represent
Heart Church

Developers with outline planning permission on the Toton Lane next to George Spencer. Initial mtg held to establish link and understand any impacts on their plans since HS2 decision.

Ministry of Defence
(DIO)
Chetwynd Barracks +
JLL

Defense Infrastructure Organisation (DIO) who are responsible for the Chetwynd site as well as their consultants, JLL.

Other stakeholders were also identified / approached with initial meetings planned in the future

Communication, the key to moving forward 1

- Established significant links to all identified direct and indirect stakeholders.
 - Schools, HS2 Delivery board, BBC, MP's office, Nottinghamshire County Council, HS2 Ltd, Defence Infrastructure Organisation, Local sports clubs
- Communicating with the community through social media, weekly digests and community events.

Communication, the key to moving forward 2

- Enable the community to interact with the development of the area to ensure involvement and ability to influence decisions and the future community.
 - Project with University of Nottingham is helping us to share visions of how the area may look in the future.
- Established an understanding with Local, regional and national government agencies that the Forum was open to development of the area.
 - The forum has established itself as a key partner in the development of the area and is now seen as a significant link to the community

Challenges for the forum and yourselves

- With a project of this magnitude and a national focus, it is important that the forum identifies the key issues of importance for the current community and how it will adapt in the future.
- We would like you to assess what you feel would be 3 of the major areas of review to get the best out of the opportunities from the arrival of the new HS2 hub at Toton.

**Any
Questions?**