

An aerial photograph showing the top of a white wind turbine in the foreground. In the background, there is a large solar farm with rows of solar panels stretching across a green field. The sky is clear and blue.

CHELVESTON RENEWABLE ENERGY & INNOVATION PARK

The UK's Largest Combined
Renewable Energies & Innovation Park





Google Earth

Image © 2022 Google

Yelden Village Hall

1 km













Battery Energy Storage
(under construction)



Hydrogen Production Plant



84,000 sq ft

Building nearing completion with direct wire power feed from surrounding Renewable Energy Park



57,000 sq ft to 200,000 sq ft - TO LET

– Vertical Farm Facility with direct wire power feed from surrounding Renewable Energy Park – Up to 14m high



50,000 sq ft to 200,000 sq ft - TO LET

Buildings to occupier requirements with direct wire power feed from surrounding Renewable Energy Park. Up to 14m high





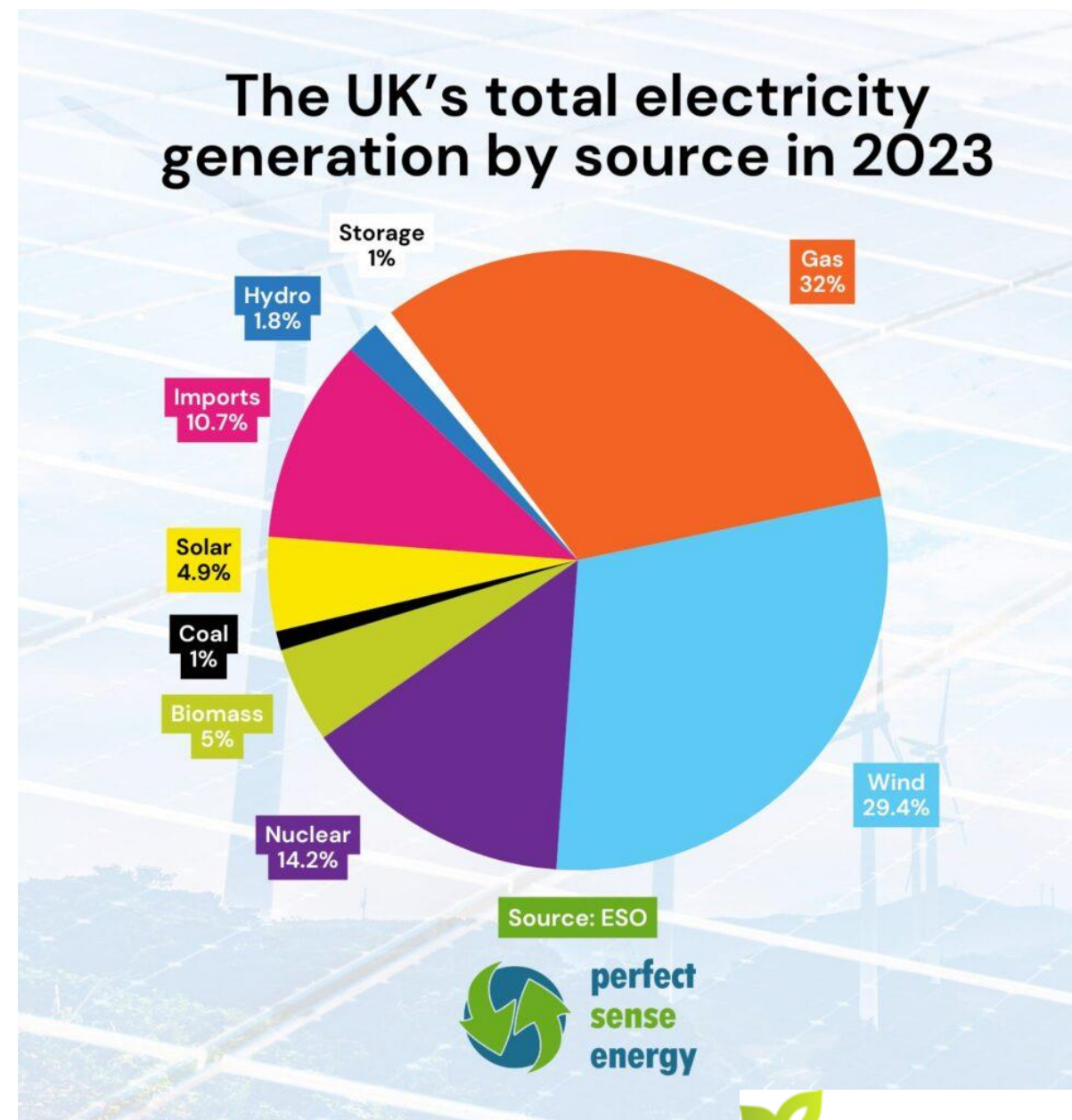
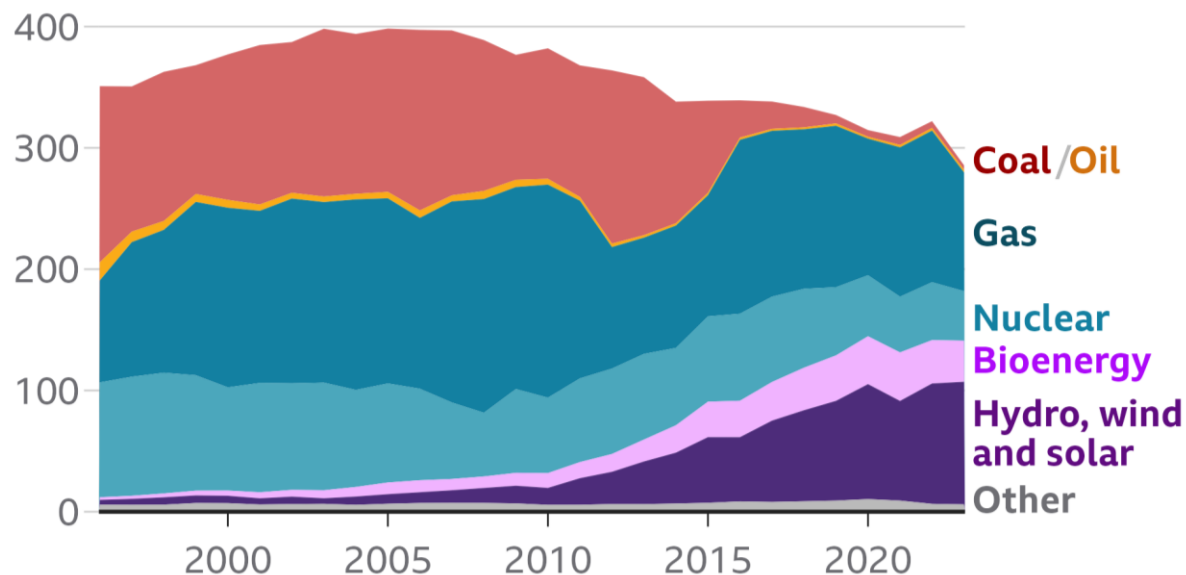
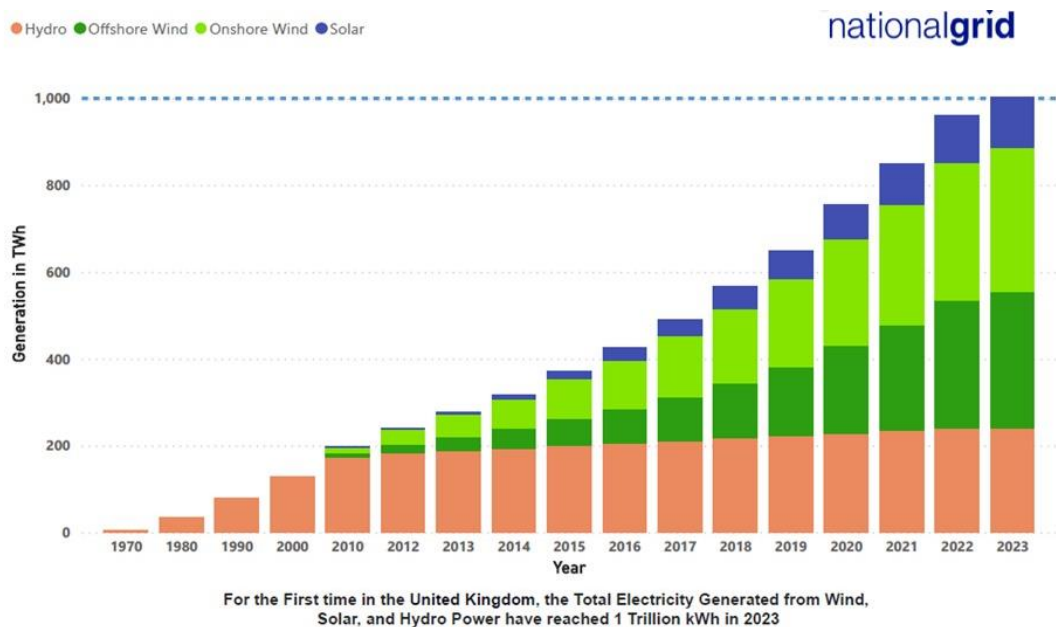


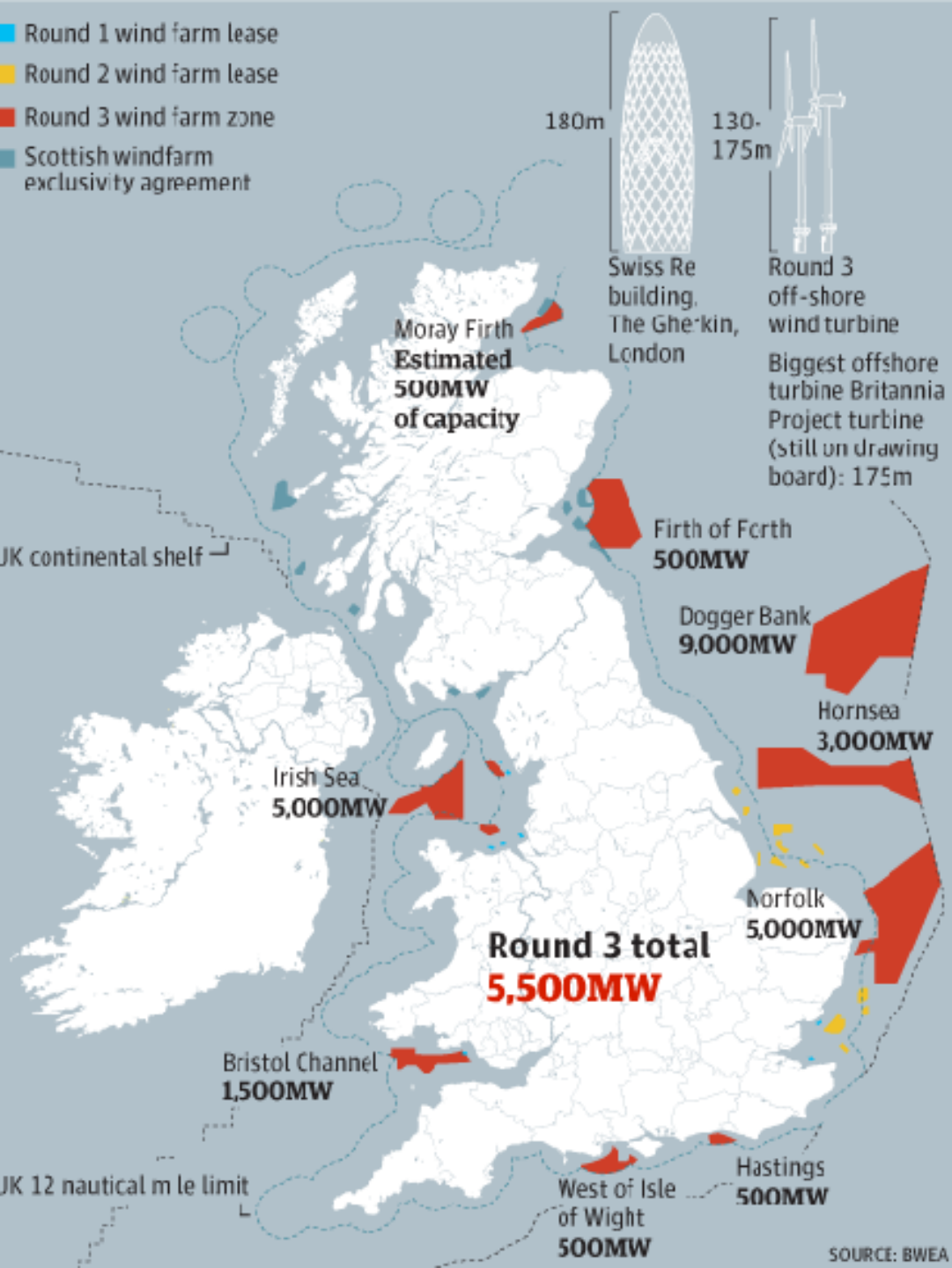




Renewable Energy

Shaping the Future of Local and National Resilience

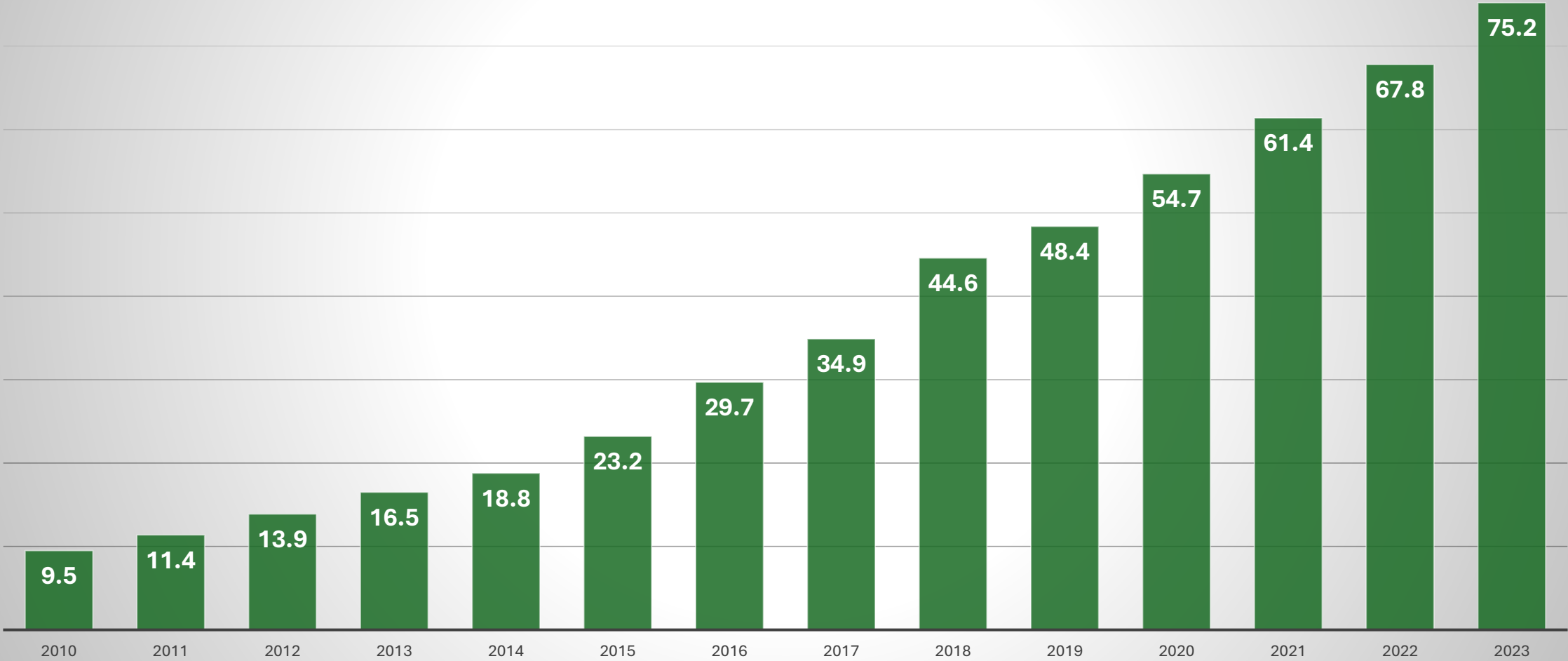




Major Milestones

- Hornsea One – world’s largest off-shore windfarm at the time
- New 50MW Solar Farms take solar from
 - 35 MW capacity in 2010
 - 17,000 MW in Q2 2024
- Mega Solar – Cleve Hill, Kent 350 MW
- Last Coal Fired power station turned off in 2024
- Flexibility Markets

Renewable Capacity (GW)



Evolution of Renewables

- Diversity
- Scale
- Flexibility
- Storage
- Decentralisation



East Midlands Renewable Initiatives



Chelveston
RENEWABLE ENERGY PARK

MIDLANDS
NET ZERO HUB

GREENFOX COMMUNITY ENERGY

Electric Places
ACCELERATING THE TRANSITION

East Midlands
Hydrogen



All of the electricity used by Leicester Business Power customers comes from Seaton Road Solar Farm near Uppingham

Local Resilience

- Physical
 - Combining generation with storage for resilience to disruption
 - Reduced need for impactful transmission pylons
- Economic
 - Less vulnerable to price fluctuations or shock impacts

This really matters. Protecting households against high gas prices cost an eye watering £45billion in the crisis- plus £billions a year in interest on that debt.

The faster we build renewables and storage - the more resilient we are.

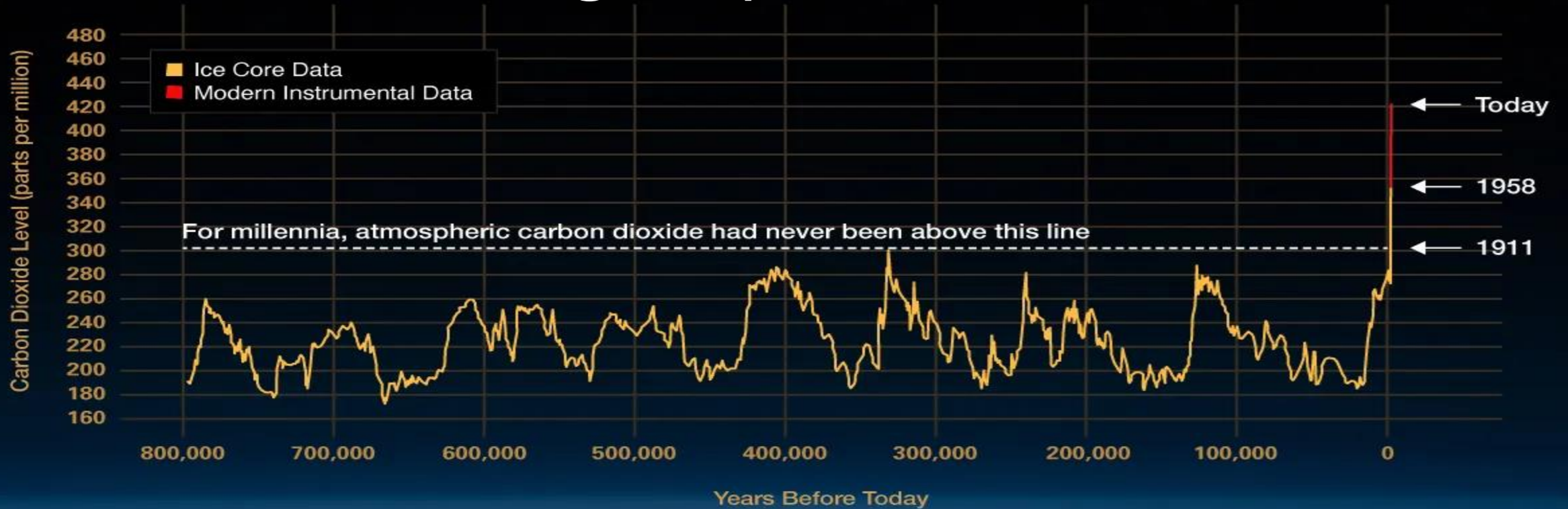
Merlin Hyman OBE



De-coupling

Mitigating the impact of gas prices

The climate change imperative



climate.nasa.gov



Green Economy

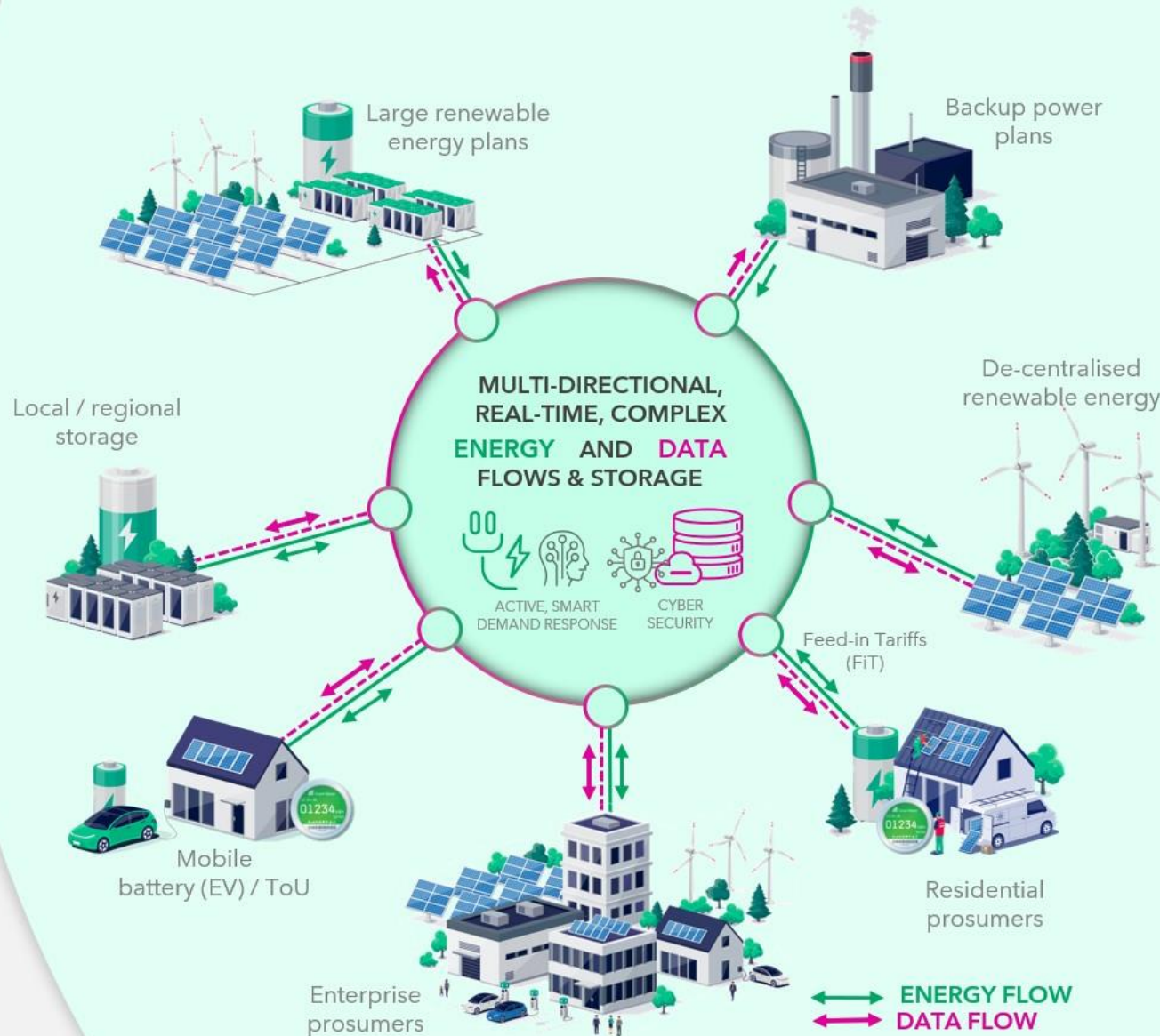
YESTERDAY

unidirectional energy flow



TOMORROW

de-centralised production, de-centralised storage, smart consumption, digital experience, bi-directional energy flow, bi-directional data flow



Emerging Industries & New Business Opportunities

Attracting Investment and Innovation

Growth of Renewable Industries

ENERGY
REVOLUTION

10 REASONS TO START OR JOIN A COMMUNITY ENERGY PROJECT



NOW!

1

Help build the system needed to **stop the climate crisis**



2

Community renewables **redirect money** from fossil fuels



3

It can **reduce energy poverty** in your area



4

You'll get to **know your neighbours** and strengthen your community



5

You will **produce your own** renewable energy



6

Helps **educate** people on the issues of energy, climate and democracy



7

It keeps the **money locally** in your community



8

You will **show other communities** what is possible



9

It will contribute to creating a **more local, more circular economy**



10

You will be building the kind of **world you want to see**



Electric Places
ACCELERATING THE TRANSITION

Local Economic and Social Benefits

RENEWABLE ENERGY GENERATION

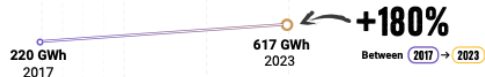
TOTAL RENEWABLE ELECTRICITY CAPACITY

398 MW capacity

TOTAL RENEWABLE ELECTRICITY GENERATION

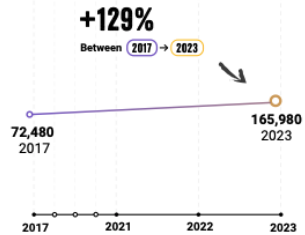
617 GWh produced in 2023

Equivalent to powering **228,530** domestic households



TOTAL TONNES OF CARBON EMISSIONS SAVED

165,980 tCO₂ saved in 2023
equivalent emissions to 209,570 passenger round trips from London to New York*
On average, a round-trip flight from London to New York emits approximately 792 kg of CO₂ per passenger.



Our survey has evolved over time so not all the statistics were gathered in earlier years

FINANCE & INVESTMENT

TOTAL ORGANISATIONAL TURNOVER

£43.2 million turnover

TOTAL INVESTMENT SECURED

£24 million investment secured in 2023

£225 million investment secured since 2017

EMPLOYEES & VOLUNTEERS

TOTAL NUMBER OF JOBS IN THE SECTOR

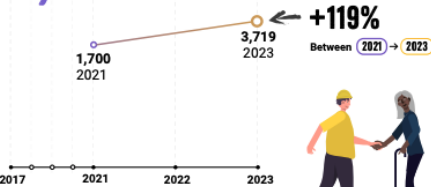
796 currently employed



102 new jobs created in 2023

TOTAL NUMBER OF VOLUNTEERS IN THE SECTOR

3,719 volunteers



LOCAL ECONOMY

FINANCIAL CONTRIBUTION TO LOCAL ECONOMY

£12.9 million contributed

to local economies from organisational expenditure and community benefit funds

INVESTMENT RAISED FROM LOCAL COMMUNITIES

£6.4 million investment raised from communities in 2023

ORGANISATIONS

COMMUNITY ENERGY ORGANISATIONS IN THE SECTOR

583 organisations



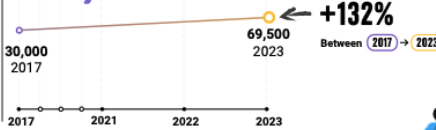
123 organisations providing energy advice

111 organisations providing low carbon transport

319 organisations providing energy efficiency retrofit

TOTAL MEMBERS OF COMMUNITY ENERGY ORGANISATIONS

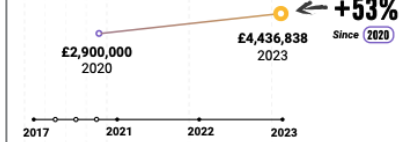
69,500 members



ENERGY EFFICIENCY & FUEL POVERTY

BILL SAVINGS FROM ENERGY EFFICIENCY & ADVICE

£4.4 million bill savings



£13.8 million saved since 2020

PIPELINE

CONTINUED SECTOR DIVERSIFICATION IN 2024

72 new energy advice and energy efficiency services

FORECAST FINANCES IN 2024

£157 million planned investment to be secured for renewable energy

STALLED RENEWABLE ENERGY

79 stalled projects with **270 MW** capacity that communities want to deliver

Produced by





Collaboration Opportunities

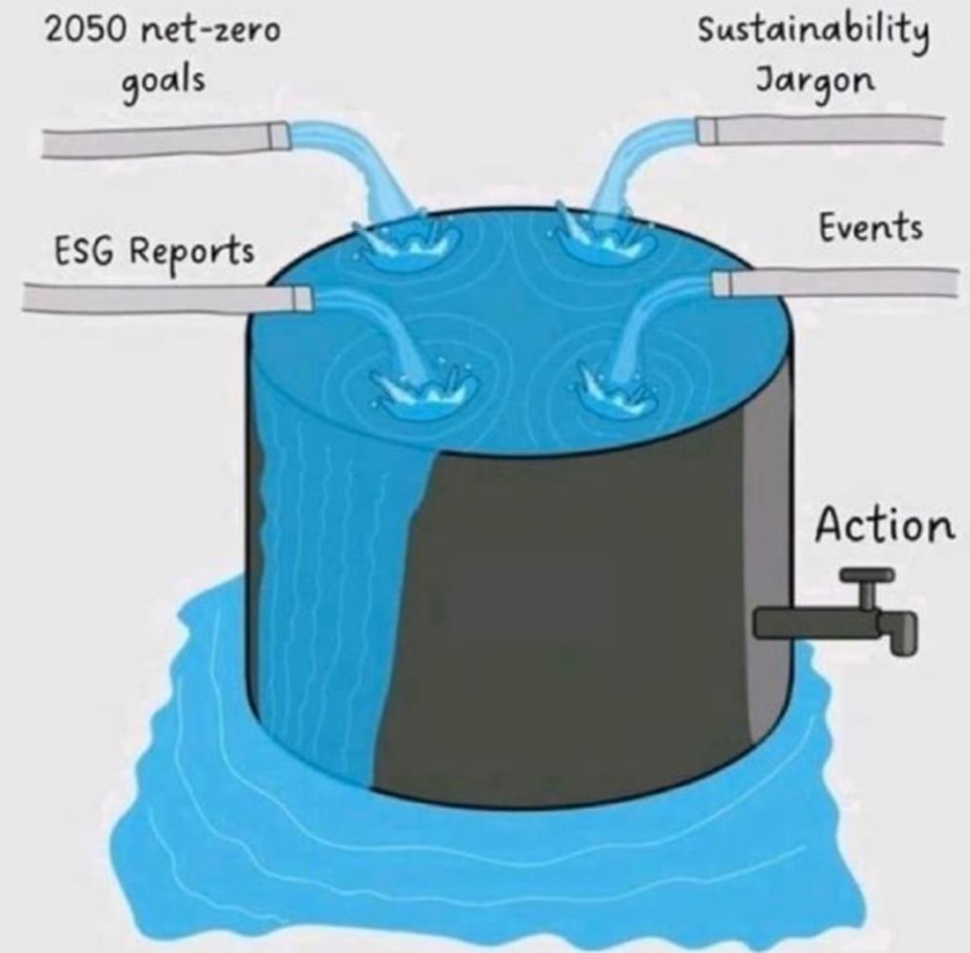
- Partnering for Progress
- Planners as Key Enablers
- Providing support and removing barriers

What future are we creating?



THINK BIG ACT BOLD

Be a place that acts



Renewable Energy = Resilience



Thank You

Questions (and Discussion)



We produce strategies and deliver projects that support community transition to Net Zero

- A not-for-profit community interest company
- Place-based R&D
- Supporting local authorities, housing developers, residents and businesses



JOINTLY OWNED BY



Solar farms and community benefits

Jo Wall – Senior Strategy Director

Jo.wall@localpartnerships.gov.uk

Mobile: 07985 476697

28 November 2024



WHO WE ARE

Local Partnerships delivers value and efficacy for the public purse.

As a **key interface between local and central government**, we provide expert advice and practical resources alongside project/programme delivery support, enabling public services to thrive.

As an **in-house consultancy jointly owned by the LGA, Treasury and Welsh Government**, we work solely for **central government departments, The Welsh Government, Councils and Combined Authorities**.

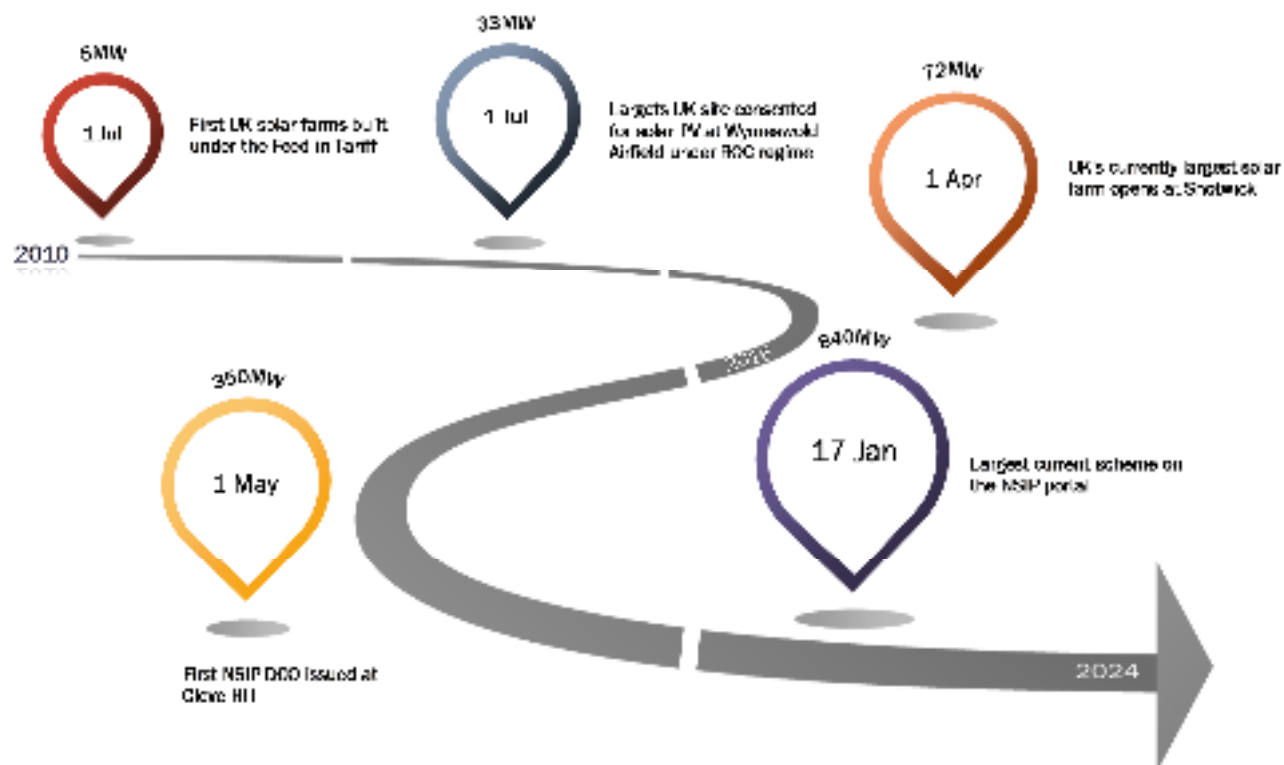
Whether supporting and **accelerating the delivery of major infrastructure**, tackling **climate challenges through waste efficiency and renewable energy** propositions through to **wider place-making initiatives**, we help transform services across the public sector ecosystem.





Rapid increase in scale

Largest scheme now is 168x the size of the initial schemes



Why the pressure and will it continue?

You won't get close to net zero 2050 without this type of development

- **14.65 GW** in the UK at end of **2023**
- Likely to see a five fold increase by **2035 to 70 GW. New government target of 50 GW by 2030**
- Grid connection becoming more difficult. Larger schemes cover fixed overheads
- Large grid connections being freed by closure of old coal fired power stations
- Where there is grid there WILL be development – if not solar PV then something else



Development Essentials

Affordable grid, available land and planning

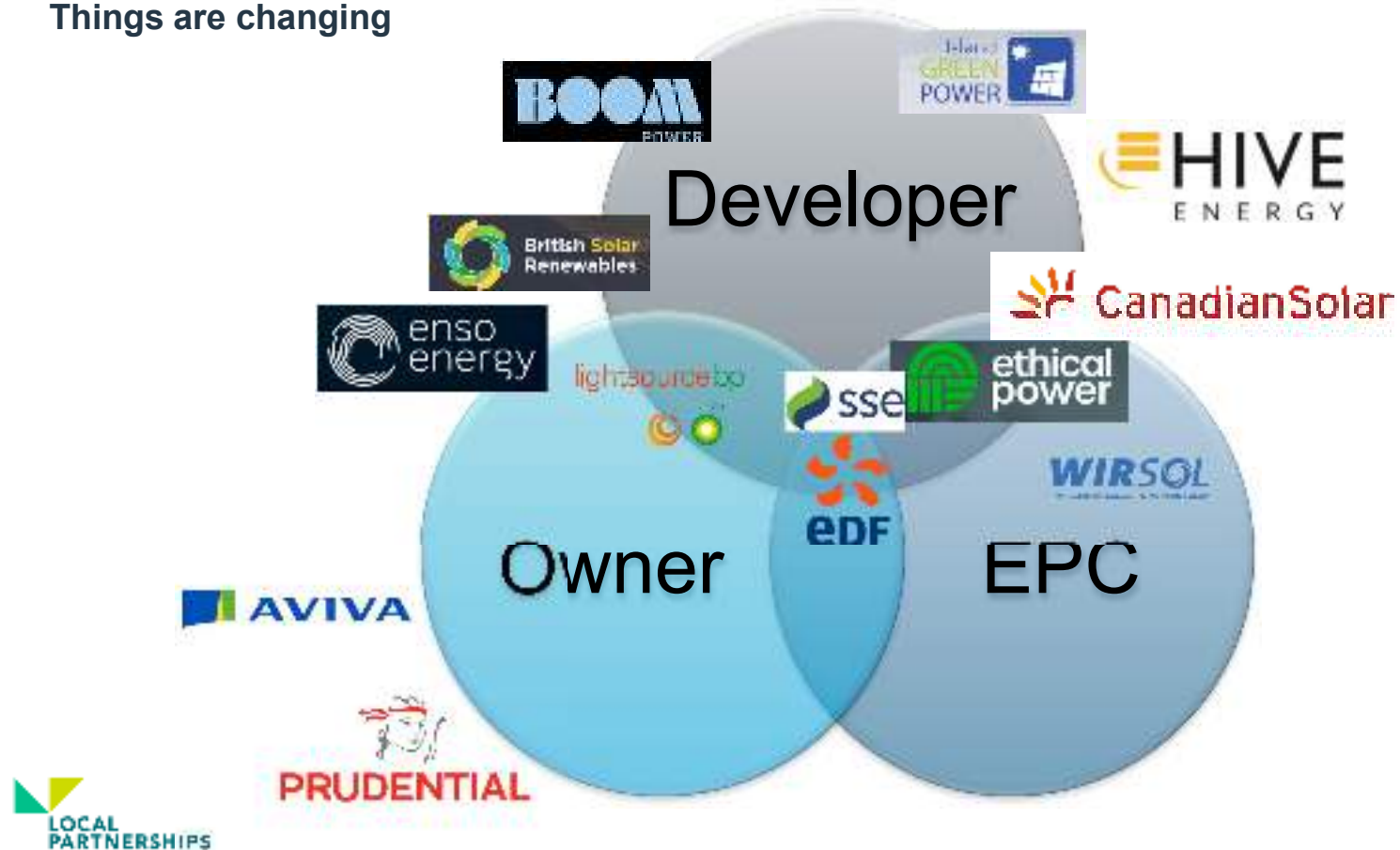
- Grid connections – distribution and transmission
- Export for solar PV and import/export for battery storage
- Land – usually a 40 year lease – but starting to see longer terms
- Larger schemes much more complex





Industry Consolidation and Players

Things are changing





What about the landowners?

Leasehold (40 years)

Rents depend on irradiance and grid costs – but generally in the range £ 700 - £ 1,000 per acre in year 1.

Rents are index linked (upwards only) in line with CPI for the term

Typically needs around 4 acres/MW.

Total rents for Cleve Hill therefore not less than c£ 1m in year 1.





Owners and Funders

Many are based outside the UK

- Cleve Hill (350 MW in Kent) will produce around £ 300m in pre-tax profits in its first 30 years of operation
- Profitability depends on grid costs, type of connection and irradiance
- Transmission connected systems are forecast to produce returns in excess of 9%IRR





Twin track approach

Managing community dialogue

Grounds for Objection

- Agricultural land
- Visual impact
- Residential amenity
- Red list ecology

Planning for a different outcome

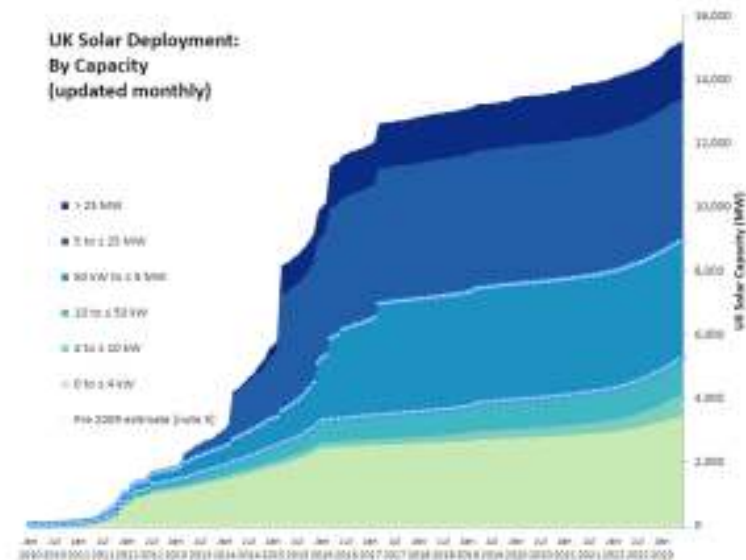
- Softening the impacts
- Maximising ecology
- Community fund
- Capturing benefits



Potential scale of community benefits

The new Government has not yet revealed its hand

- Total additional solar PV by 2030 is 50 GW
- Current deployment is around 15 GW
- Increase of 35 GW in 6 years to meet the target
- Around 5.5 GW is currently roof mounted and around 7 GW is ground mounted of 5MW or more
- To meet the target most (say 75% of target) will be ground mounted > 5MW
- Community benefits at minimum £ 400/MW in the order of £ 10.5m pa index linked – but it could be more





Purpose of community (benefit) funds

Raising ambition

- Solar PV schemes have typically been small and administered either by a local parish council or by the developer
- Larger schemes may be more akin to larger infrastructure developments (such as Sizewell C). This will provide £ 2m pa for local projects.
- The 2GW of solar around Gate Burton in Lincolnshire could realise around £ 1m pa in community benefits

The new Government are keen to see much wider/deeper public engagement around benefits





An example – Botley West

The Botley West submitted in November 2024, proposal for c840 MW of solar PV.

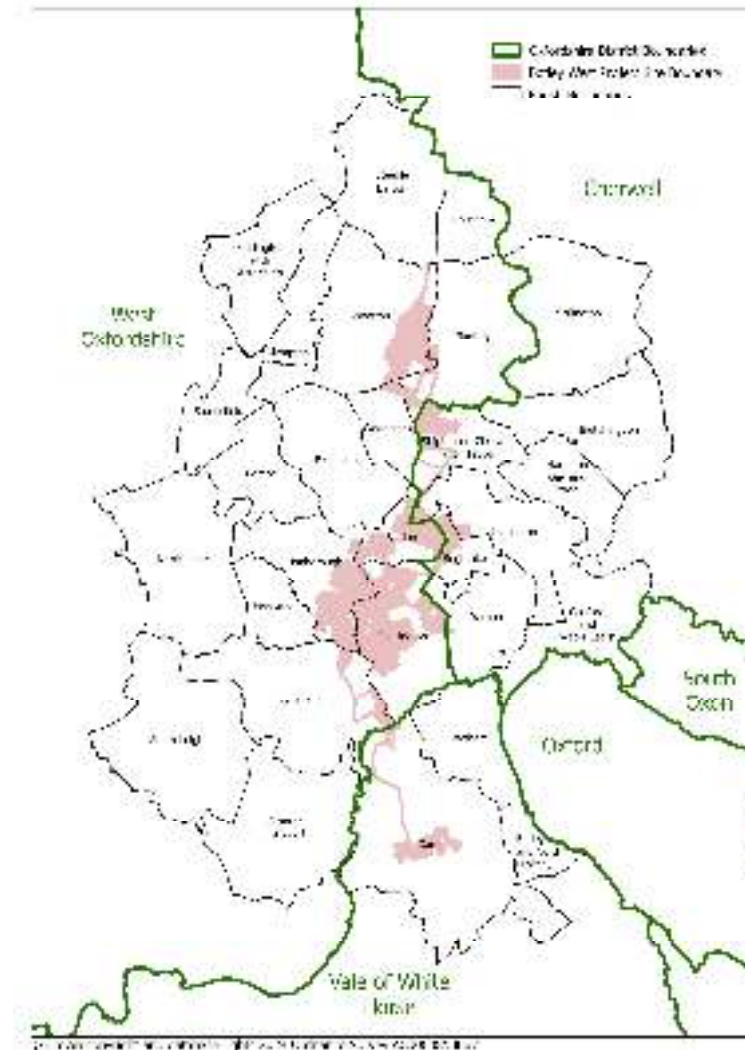
Covers 3 district council areas, with time-consuming 17 parishes affected directly or indirectly.

Historically parish councils have been used to distribute community funds – but these are much larger scale.

Complex and time consuming negotiations – but will it get to those most affected?

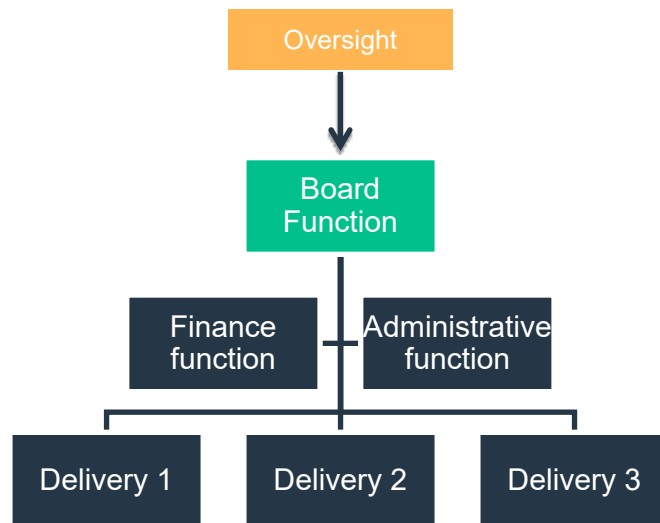
Lots of focus on securing benefits and negotiating for them – rather less on understanding what community priorities might be in this context

Parish councils and communities are not the same, and it can be hard for younger voices and those who are less opposed to the development to be heard



Target Operating Structure

Key pieces of the jigsaw



Function	Key activities
Oversight	Ensures the board act in accordance with terms of reference . Provides mechanism for dispute resolution and dealing with significant governance issues . Appoints and reviews performance of Board.
Board	Responsible for the direction of funds, commissioning of delivery, reviewing delivery success, setting priorities and community engagement .
Financially accountable body	Collects the funds on behalf of the fund. Undertakes financial management and reporting .
Administrative body	Provides the capacity to deliver the decisions the Board have made.
Delivery	Deliver the activities identified and commissioned by the board.

Thank you

jo.wall@localpartnerships.gov.uk
07985 476697



localpartnerships.org.uk