

A weekly round up of local government news in the East Midlands brought to you by East Midlands Councils

## Top items this week

19 DECEMBER 2025



**Provisional Local Government Finance Settlement 2026-27**



**Consultation on National Planning Policy Framework**



**Homes England publish strategic plan 2025 to 2030**



**Upcoming EMC events and activities**

## Provisional Local Government Finance Settlement 2026-27

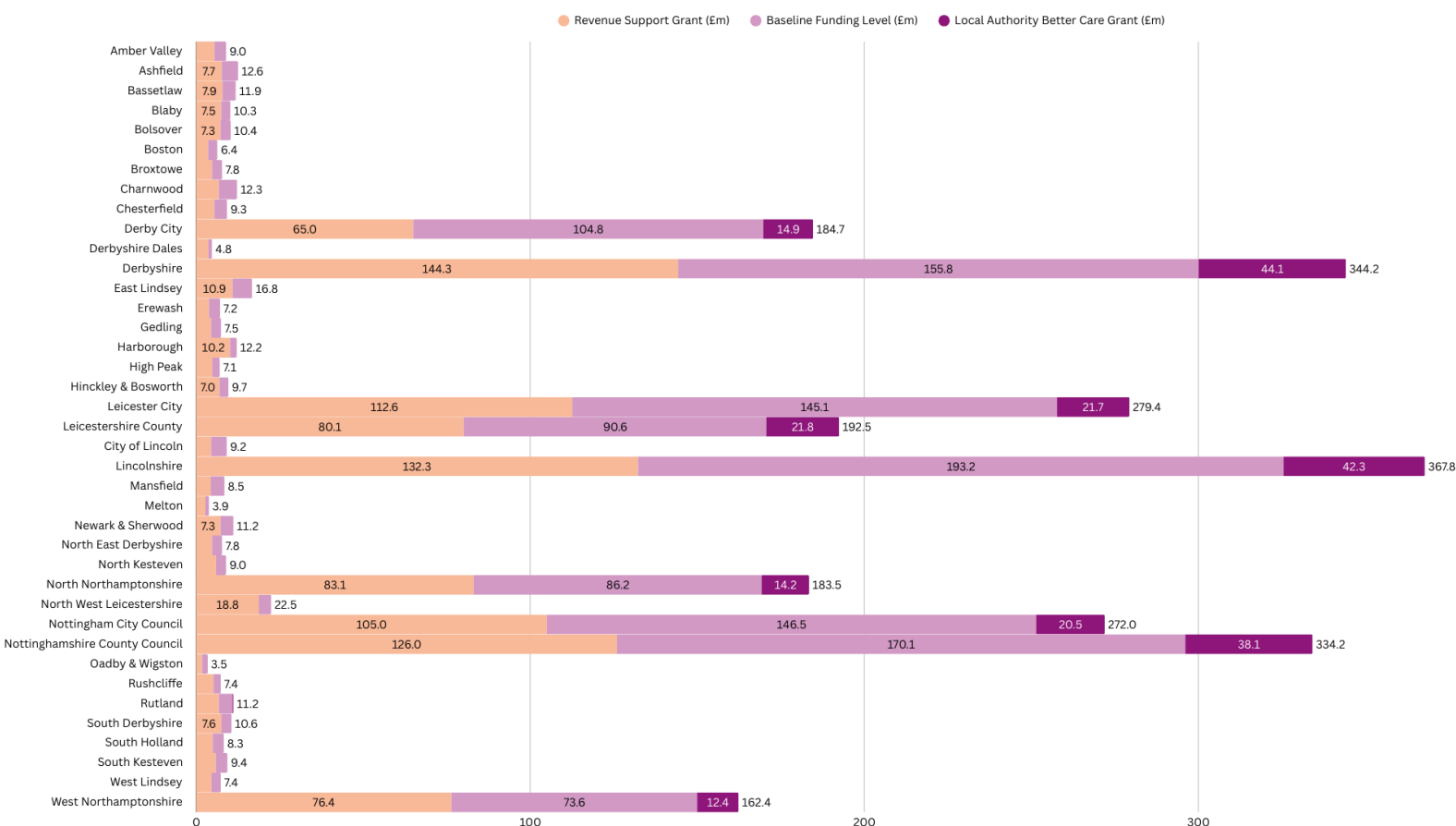
This week, MHCLG set out proposals for the 2026-27 to 2028-29 Local Government Finance Settlement, including provisional local authority funding allocations.

The consultation for the provisional settlement for 2026-27 will be open for four weeks, closing 14 January 2026. This provisional Settlement is the first multi-year settlement in a decade, through which they will deliver the Fair Funding Review 2.0 reforms.

The provisional figures indicate that total Core Spending Power (CPS) will rise by 5.7% across the UK in 26/27, 4.3 % in 27/28 and 4.4% in 28/29. Across the East Midlands, CPS will rise year on year by 6.5% in 26/27, 5.5% in 27/28 and 5.4% in 28/29.

Across the region, councils are expected to receive £2,605.2million in Fair Funding Allocations, detailed in the graph below.

[READ MORE](#)



## EMC Response to Home Office crack down on data sharing with Councils.

Following a data breach that did not originate in the East Midlands, the Home Office has confirmed it has paused the sharing of regional asylum dispersal data with local authorities and Strategic Migration Partnerships.

The data affected includes information on the number of people accommodated in hotels in each area, as well as the acquisition of housing within communities. This pause makes it more difficult for councils and regional partnerships to understand whether they are above or below their agreed asylum dispersal allocation and to plan effectively for capacity and support.

**Cllr John Doddy, Chair of the East Midlands Councils' Regional Migration Board, said:** *"We are continuing to work closely with the Home Office to restore access to this essential data. Without it, the local authorities in our region face real challenges in supporting effective asylum dispersal, and are limited in their ability to understand current allocation levels and local capacity. It is vital that Strategic Migration Partnerships and local authorities are trusted to hold accurate and timely information that directly affects their areas and services."*

East Midlands Councils will keep partners and colleagues updated as discussions with the Home Office continue.

---

## Consultation on a new set of planning reforms to the National Planning Policy Framework

MHCLG has a consultation seeking views on a revised version of the National Planning Policy Framework (NPPF).

A draft NPPF has been published alongside this consultation. The proposals aim to accelerate delivery of up to 1.5 million homes this Parliament by making the system clearer and faster, including a default presumption in favour of development on brownfield land, higher-density building in towns and cities, and housing around well-connected rail stations. Measures include new minimum density expectations, a new "medium site" category for developments of 10 to 49 homes, and streamlined requirements on energy efficiency and biodiversity for smaller sites. Alongside the consultation, the government has set out additional steps to support delivery, including funding to increase planning capacity, support for SME builders, and faster decision-making for compliant schemes. The reforms are intended to override conflicting local policies from the outset, create greater certainty for developers, and unlock an estimated 1.8 million homes over the coming years and decades, while maintaining national standards for design, infrastructure, and environmental protection.

The consultation closes on 10 March.

[READ MORE](#)

---

## Homes England publish strategic plan 2025 to 2030

Last week, Homes England published its new strategic plan, setting out how it will harness its expertise, funding, resources and influence to help deliver high-quality, safe and sustainable homes and vibrant, inclusive communities.

[READ MORE](#)

---

## Funding to help victims of domestic abuse to access support

The Government has this week announced councils will receive nearly £500million over three years to provide support in for victims of domestic abuse.

As part of the Violence against Women and Girls strategy, which was launched this week, an extra £19 million of government funding will be invested for support in safe accommodation, providing significant expansion in domestic abuse support.

[READ MORE](#)

## Councils offered flexibility to complete reorganisation

Some councils have told the department that elections could derail once-in-a-generation plans to scrap wasteful 'two-tier' councils.

[READ MORE](#)

## EMC Learning and Development Events

Supporting leadership and management development needs in the lead up to LGR is a key priority and EMC are providing a range of ILM accredited courses to facilitate this. We will be advertising further ILM sessions in the next couple of months.

### ILM 3 Award in Leadership and Management (6 days)

This is a 6-day programme designed for those currently managing or aspiring to lead multi-disciplinary teams, particularly within the context of local government, with cross-functional collaboration.

It is ideally suited to officers and managers who work through influence and partnerships to deliver outcomes.

The course covers essential leadership and management topics to build confidence in navigating complex challenges, improving service quality, and driving innovation in public service delivery.

Register now:

[Cohort 1 \(6 days\) Starting 4 February 2026](#)

[Cohort 2 \(6 days\) Starting 12 March 2026](#)

### East Midlands Challenge

The East Midlands Challenge returns on 29 April 2026, offering a practical, high-pressure development experience for future leaders across local government, health, housing and emergency services.

It is a full-day, immersive development exercise that places teams in realistic, time-pressured scenarios involving service planning, competing priorities and customer needs.

Teams work through complex, realistic scenarios that test resilience, decision-making and political awareness.

[READ MORE](#)

## Have we got the Energy?

### *Understanding the decisions that will shape our energy future*

EMC is hosting a focused session for senior officers and councillors on the key elements of national and regional energy systems, markets and planning that will shape local decision-making in the coming years. This event will take place on Thursday, 19 March 2026, from 10 am to 1 pm at Devonshire Place in Leicester. Attendance is free for local authority officers and councillors across the region. For more information on the event

[READ MORE](#)

### EMC Leadership

Chair: Cllr Sean Matthews  
Vice Chair: Cllr Elly Cutkelvin  
Vice Chair: Cllr Tricia Gilby  
Conservative Group: Cllr Phil King  
Labour Group: Cllr Jewel Miah  
Independent Group: Cllr Ashley Baxter  
Lib Dem Group: Cllr Gale Waller  
Reform UK Group: Cllr Martin Griffiths  
Executive Director: Stuart Young

### East Midlands Councils

Pera Business Park  
Nottingham Road  
Melton Mowbray  
Leicestershire  
LE13 0PB

